



Fabric & Stain Options

Optima Products, Inc. offers a wide range of moisture-impermeable and stain resistant fabrics suitable for healthcare applications. Fabrics/patterns are classified and priced by Grade. Fabric Grade will influence both the price and lead-time. Please contact Optima Products or your local distributor for details regarding pricing, lead-times and other questions

Grade A & COM

Customer's own material

- Four stock vinyl leatherettes – Uniroyal Nauga Soft Contract Grade Vinyl Leatherette
 - Green PR 49, Blue PR 55, Burgundy PR 36, Mushroom/Cocoa PR 51
 - *(need to scan these because the colors on the Nauga Soft site are terrible)*
- COM (four to six week lead time after fabric is received)
 - Nominal upcharge for matched prints
 - Check with Optima Products or your distributor for COM yardage requirements
- No Upcharge

Grade B

- Nauga Soft Leatherettes – special order requires four to six week lead time
- Nominal upcharge applies
- Longer lead-time

Grade C

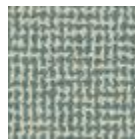
- Stock Crypton
 - Metro



Metro Seaglass



Metro Hunter



Metro Lagoon



Metro Conch



Metro Camel



Metro Merlot



Metro Geode



Metro Lake



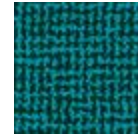
Metro Marina



Metro Huckleberry



Metro Hyacinth



Metro Peacock



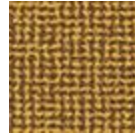
Metro Gypsum



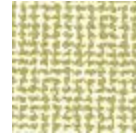
Metro Cranberry



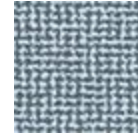
Metro Harvest



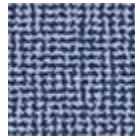
Metro Mustard



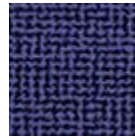
Metro Celedon



Metro Slate



Metro Cornflower



Metro Midnight

- Nominal upcharge applies

Grade D

- Crypton - special order requires four to six week lead time
- Nominal upcharge applies
- Longer lead-time

Grade E

- Crypton - special order requires four to six week lead time
- Nominal upcharge applies
- Longer lead-time

Grade F

- Crypton - special order requires four to six week lead time
- Nominal upcharge applies
- Longer lead-time

Grade G

- Crypton - special order requires four to six week lead time
- Nominal upcharge applies

Visit Cryton Fabrics at <http://www.cryptonfabric.com/> for more information.